

# SEA GRASS & SISAL

## ASIAN COLLECTION 2020 (on Felt Back)

### & INDOOR BORDERS



# SISAL

Sisal (the name of a Yucatan port in Mexico) is a noble fibre, long and supple, made from the leaves of the Agave Sisalana, a subtropical plant from South America. These fibres are collected by passing the leaves under water and pressing them. They are then washed, dried and spun.

Used since time immemorial for ropes, sisal is now used as a natural floor covering, highly prized for its sure effect in the decoration of the home.

Its natural colour is creamy white, but sisal is the plant fibre that best accepts dyes. It lends itself to the use of intense colour for contemporary harmonies.

Resistant to wear and rubbing, soft to the touch, but not recommended in damp rooms, our sisal floor covering are particularly appropriate for bedrooms, sitting rooms, corridors, stairs, private and professional offices, as well as stores and shops.

To keep its beautiful appearance a long time, sisal needs regular upkeep and careful use (see care instructions)

## LAYING RECOMMENDATIONS

Our natural floor coverings, now available on a felt backing, must be laid according to the rule book.

Before cutting, it is essential to unfold these covering on their future base and leave them to acclimatize for 48 h to allow them to adopt to the hygrometry of the room.

As fibre is a living material, it may register a few variations in measurement. So it is necessary to plan a safety margin.

After following all these precautions of use, stretch this covering across the room so that it extends up the skirting boards, glue half to the base with acrylic paste, starting from the centre of the room towards the edges, pressing firmly down so as to guarantee perfect adherence, proceed in the same way for the other side. To finish, just cut the base along the skirting boards.

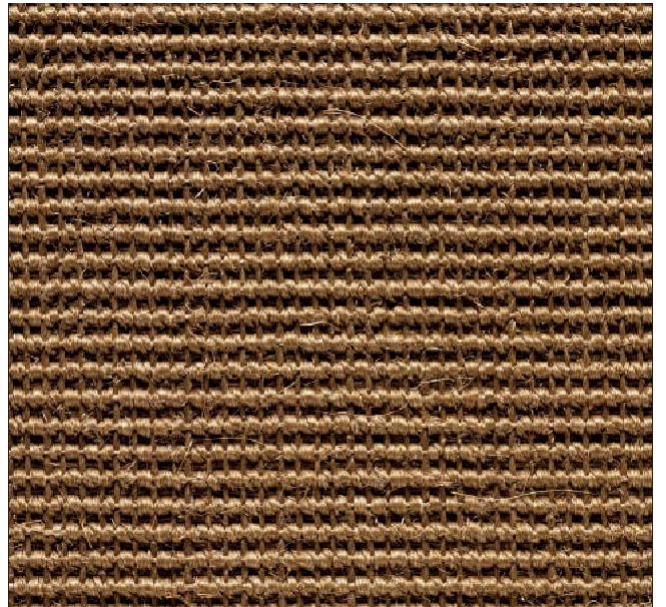
## CARE INSTRUCTIONS

These natural floor covering require regular upkeep and careful use. So that they keep their beautiful appearance longer, vacuum regularly, taking care to brush without rubbing. In addition, once or twice a year, depending on the wear, it is advisable to (dry) clean the base thoroughly.

# SISAL MINI BOUCLE



Mini Boucle 8036



Mini Boucle 8047



Mini Boucle 8033



Mini Boucle 8042



Mini Boucle 8011



Mini Boucle 8070



Sisal Mini Boucle 8047

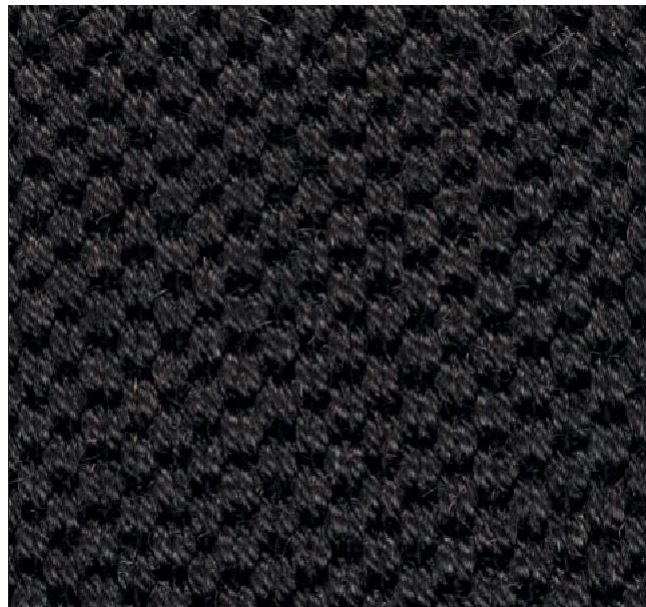
#### SISAL MINI BOUCLE - Technical Specification

Manufacturing Process	- Woven	Backing Weight	- ca. 1,100 gr/m <sup>2</sup>	Colour Fastness to Rub	- 3-4
Surface Aspect	- Mini Boucle	Total Weight	- ca. 2,900 gr/m <sup>2</sup>	Vertical Resistance	- 4
Pile Composition	- 100% Sisal	Total Height	- ca. 6.5 mm	Flammability	- Cfl-s1
Pile Weight	- ca. 1,800 gr/m <sup>2</sup>	Colour Fastness to Light	- 4	Thermal Resistance	- 4
Pile Height	- ca. 5 mm	Permanent Antistatic	- 5	Sound Insulation	- 5
Backing	- Felt	Surface Resistance	- 3-4	Colour Fastness to Water	- 3-4

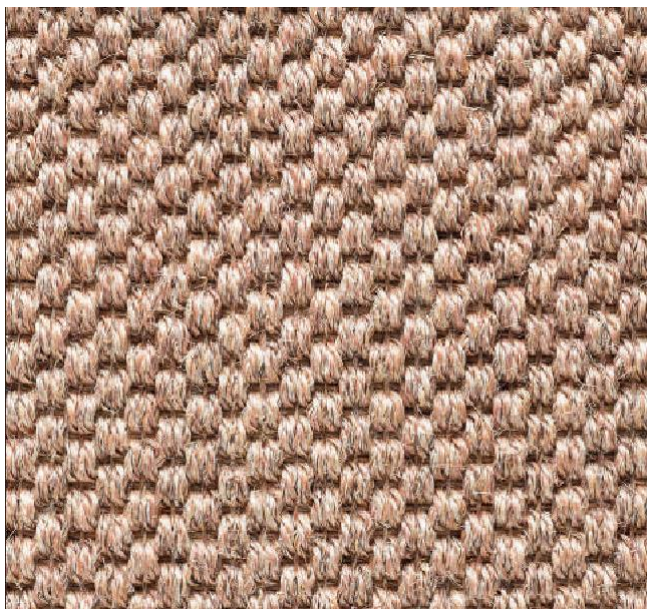
# SISAL TIGRA



Tigra 9004



Tigra 9070



Tigra 9042



Tigra 9001



Tigra 9007



Tigra 9000



Sisal Tigra 9001

**SISAL TIGRA - Technical Specification**

Manufacturing Process - Woven	Backing Weight - ca. 1,100 gr/m <sup>2</sup>	Colour Fastness to Rub - 3-4
Surface Aspect - Tiger Eye Open	Total Weight - ca. 3,050 gr/m <sup>2</sup>	Vertical Resistance - 4
Pile Composition - 100% Sisal	Total Height - ca. 10 mm	Flammability - Dfl-s 1
Pile Weight - ca. 1,950 gr/m <sup>2</sup>	Colour Fastness to Light - 4	Thermal Resistance - 4
Pile Height - ca. 8 mm	Permanent Antistatic - 5	Sound Insulation - 5

# SISAL KOM



KOM Bi-Colour 217



KOM Bi-Colour 220



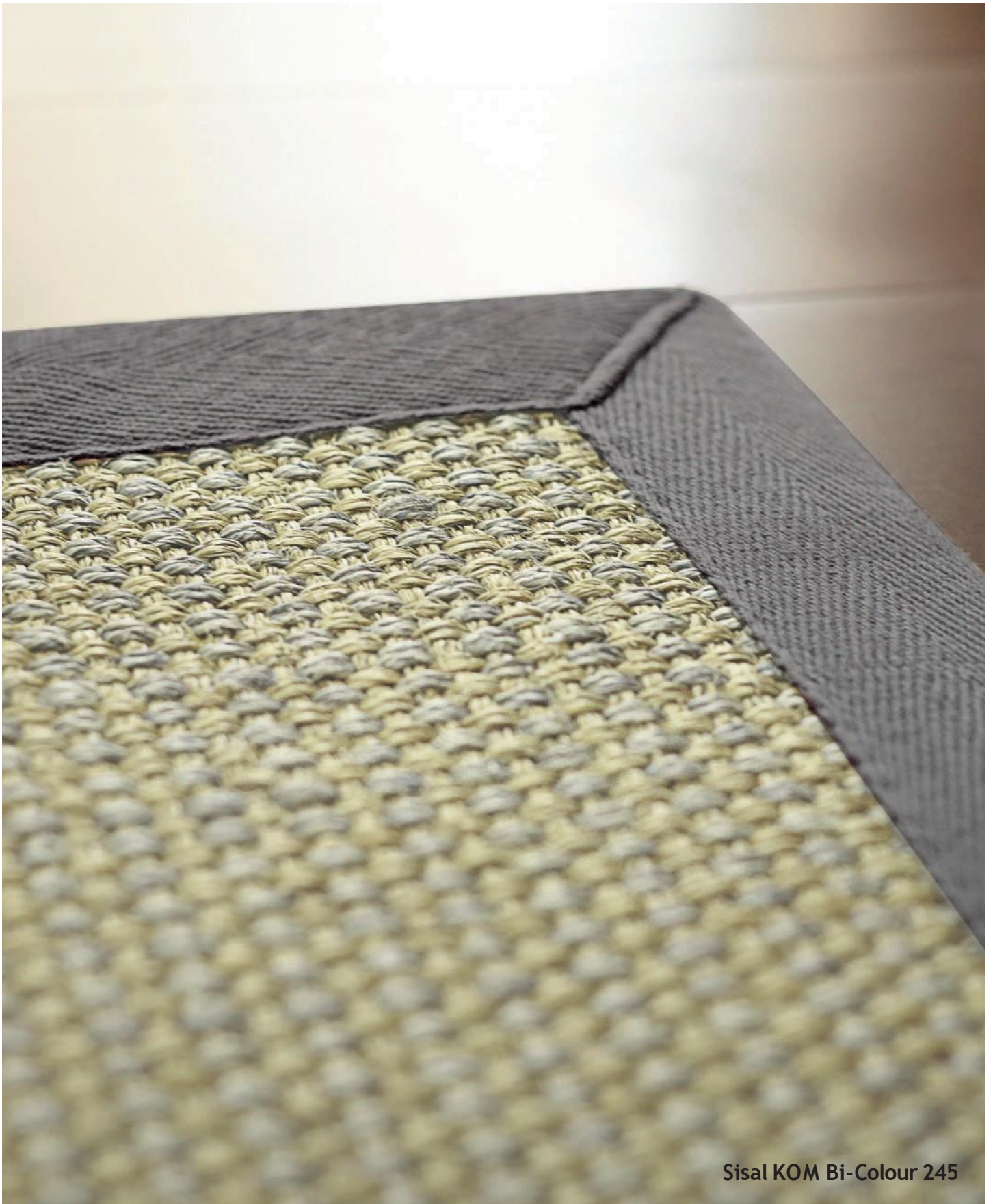
KOM Bi-Colour 245



KOM Bi-Colour 203



Sisal KOM 011



Sisal KOM Bi-Colour 245

#### SISAL KOM BI-COLOUR - Technical Specification

Manufacturing Process - Woven	Backing Weight - ca. 1,100 gr/m <sup>2</sup>	Colour Fastness to Rub - 3-4
Surface Aspect - Flat Weave	Total Weight - ca. 2,800 gr/m <sup>2</sup>	Vertical Resistance - 4
Pile Composition - 100% Sisal	Total Height - ca. 4.4 mm	Flammability - Dfl-s1
Pile Weight - ca. 1,700 gr/m <sup>2</sup>	Colour Fastness to Light - 4	Thermal Resistance - 4
Pile Height - ca. 4 mm	Permanent Antistatic - 5	Sound Insulation - 5
Backing - Felt	Surface Resistance - 3-4	Colour Fastness to Water - 3-4



# SISAL SAMBROSSA



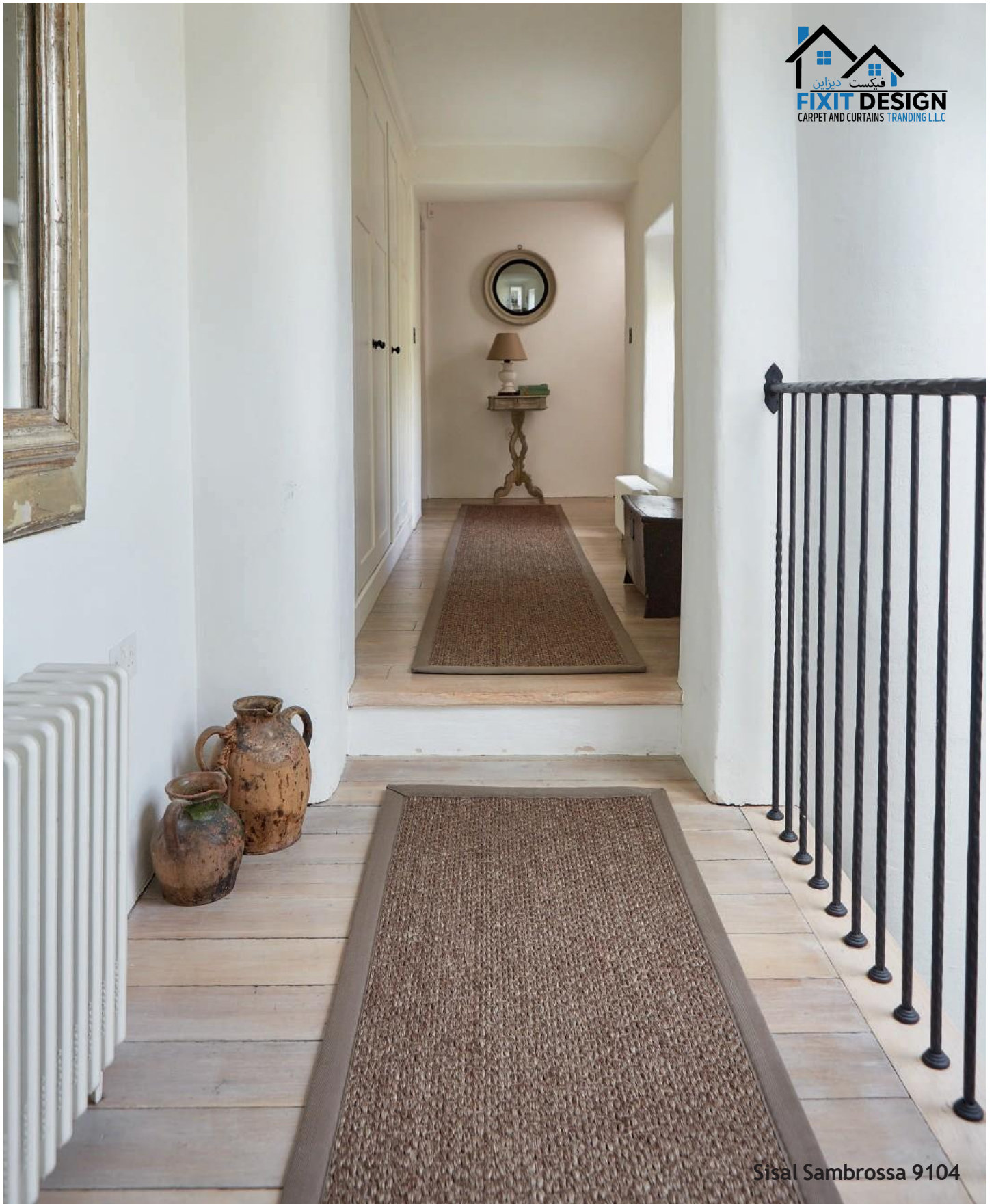
Sisal Sambrossa 9101



Sisal Sambrossa 9104



Sisal Sambrossa 9101



Sisal Sambrossa 9104

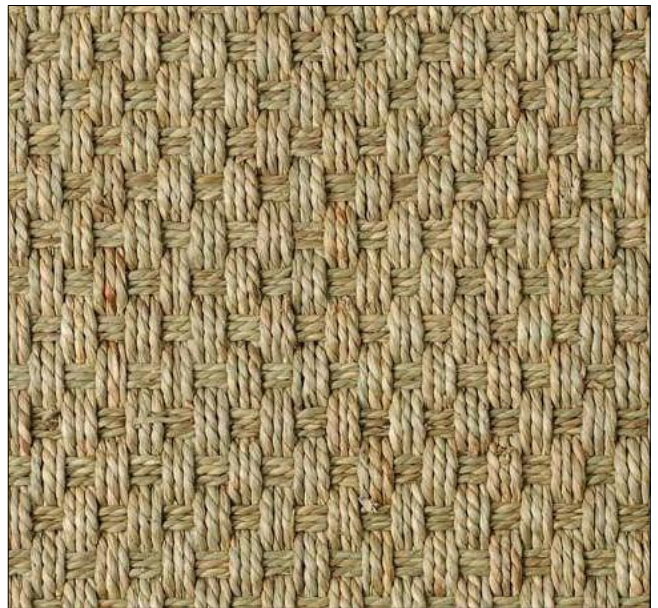
### SISAL SAMBROSSA - Technical Specification

Manufacturing Process	- Woven	Backing Weight	- ca. 1,100 gr/m <sup>2</sup>	Colour Fastness to Rub	- 3-4
Surface Aspect	- Large Boucle	Total Weight	- ca. 3,450 gr/m <sup>2</sup>	Vertical Resistance	- 4
Pile Composition	- 100% Sisal	Total Height	- ca. 10 mm	Flammability	- Dfl-s1
Pile Weight	- ca. 2,350 gr/m <sup>2</sup>	Colour Fastness to Light	- 4	Thermal Resistance	- 4
Pile Height	- ca. 8 mm	Permanent Antistatic	- 5	Sound Insulation	- 5
Backing	- Felt	Surface Resistance	- 3-4	Colour Fastness to Water	- 3-4

## SEA GRASS (on rubber backing)



FG-100  
Fine Grass – Panama 2 x 1



FG-103  
Fine Grass – Panama 3 x 3



FG-104  
Fine Grass – Panama 4 x 4



FG-200  
Fine Grass – Herringbone

### SEA GRASS

The seagrass, a smooth, soft fibre, comes from an aquatic plant that grows in fresh and salt water estuaries. Seagrass will delight you with its traditional appearance, its natural colours, its natural non absorbent properties and its great resistance, even in damp rooms, as long as there is regular ventilation. It has to be humidified regularly (see care instructions) to keep its elasticity and sheen.

Seagrass will find its place quite naturally in all living environments, public and private.

**CARE INSTRUCTIONS** : Natural floor coverings require regular upkeep and careful use. In order to retain their beautiful appearance longer, vacuum regularly, taking care to brush without rubbing.

In addition, once or twice a year, depending on the wear, it is advisable to dry clean the base thoroughly.

Seagrass coverings must also be humidified regularly so as to keep its elasticity and sheen.



Sisal Mini Boucle 8047



Sisal Tigra 9007



Sisal Sambrossa 9104